

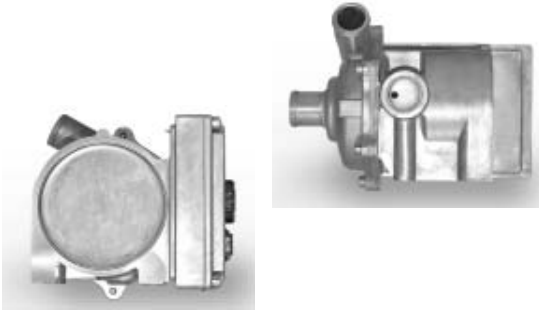
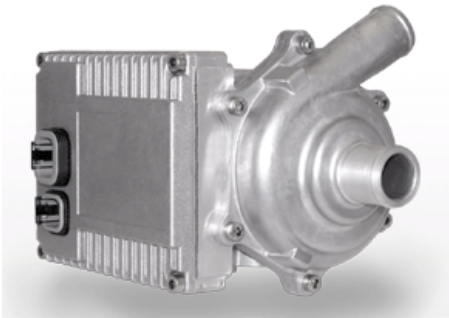


North American  
Bus Industries, Inc.

AFTERMARKET PARTS  
DIVISION

# New Brushless DC Recirculation Water Pump with Integrated Controller

## 6325261



### FEATURES AND BENEFITS

**HIGH FLOW AND PRESSURE CAPABILITY**

**COMPACT, LIGHTWEIGHT DESIGN**

**HIGH FLOW AND PRESSURE CAPABILITY**

**VARIOUS VOLTAGES INCLUDING 12/24 VDC**

**FULLY SEALED, CORROSION AND WATER RESISTANT**

**HIGH EFFICIENCY**

**LONG LIFE BRUSHLESS MOTOR**

**EXTREMELY QUIET**

**EASILY INTEGRATES WITH CURRENT SYSTEM**

03072008



**A remote mount electric water pump which can withstand the most extreme conditions, which operates properly in the harshest environments. Capable of full controllability, or single speed, this water pump can fulfill a variety cooling needs, without any limitations or restrictions. Utilizing a patented flow-thru diffuser design allows for extremely high efficiency in a small and easily adaptable package, thus allowing system integration ease.**



**Southern Parts Distribution Center**  
106 National Drive, Anniston, AL 36207 USA  
Toll Free: 888-333-NABI (6224)  
Toll Free Fax: 800-794-9799  
E-mail: POpronto@nabiusa.com



**Ohio Parts Distribution Center**  
1275 S. Houk Rd, Delaware, OH 43015 USA  
Tel: 740-369-1056 Toll free: 888-333-NABI (6224)  
Fax: 740-363-5897 Toll Free Fax: 800-794-9799  
E-mail: parts@nabiusa.com



**Western Parts Distribution Center**  
1011 East Main, Suite 406, Puyallup, WA 98372 USA  
Tel: 253-922-5152 Toll Free: 888-922-5152  
Fax: 253-922-5191  
E-mail: bids@nabiusa.com

07102008